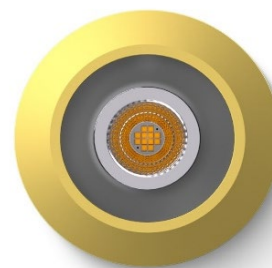


## Datasheet

### LED Spot RGBW Tree

Part No: 100491



#### About the product

The Loxone LED Spot RGBW Tree is a recessed spot that combines colored light and warm white light. It is directly controlled and dimmed via the Tree interface.

#### Electrical Data

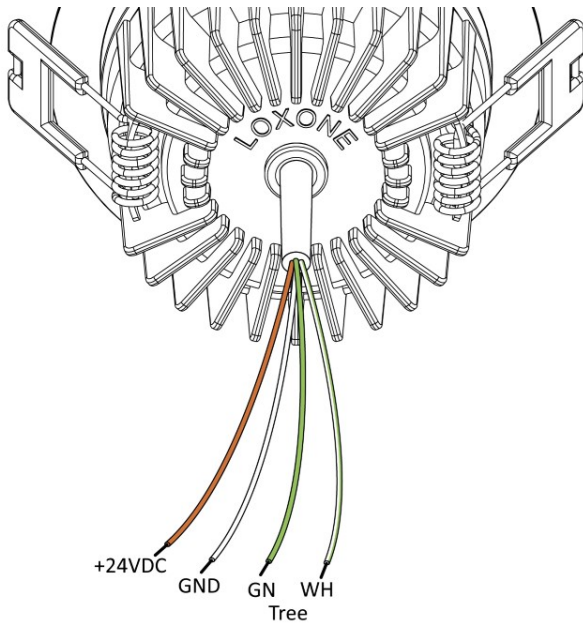
|                                  |  |
|----------------------------------|--|
| Power supply                     | 21.6 ... 25.2VDC   |
| Power consumption                | Standby: max. 100mW<br>Red: 2.0W<br>Green: 1.7W<br>Blue: 1.7W<br>Warm White: 7.5W<br>max. 7.5W |
| Dimming range                    | 0 ... 100%   |
| Ambient temperature              | -40 ... 55°C / -40 ... 131°F   |
| Humidity                         | max. 95% r.H. (non condensing)   |
| PWM frequency                    | 400Hz  |
| Energy efficiency (EU) 2017/1369 | G  |

#### Connections

|                        | Connection Cable            | Connection Terminals                     |
|------------------------|-----------------------------|--|
| Wire cross-section     | 0.75mm <sup>2</sup> / AWG18 | 0.14 ... 4mm <sup>2</sup> / AWG24 ... 12 |
| Stripping length       | 5mm / 0.2"                  | 11mm / 0.43"                             |
| Temperature resistance | max. 70°C / 158°F           | max. 85°C / 185°F                        |
| Cable length           | 120mm / 4.72"               | -  |
| Orange / White         | + 24VDC / GND               | -  |
| Green / White          | Loxone Tree                 | -  |

# LOXONE

## Connection Diagram



## Light Properties

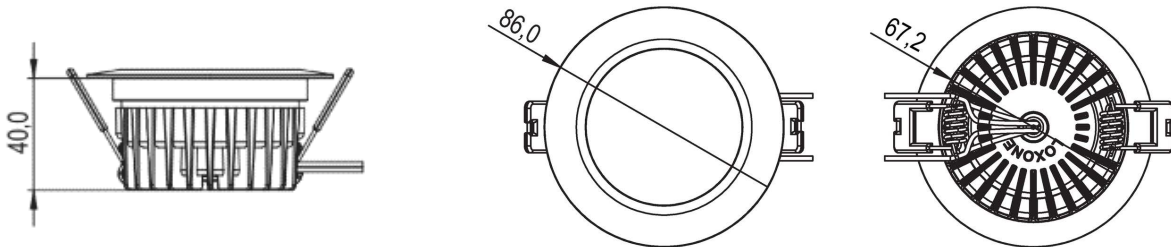
|                              |                         |
|------------------------------|-------------------------|
| Colour temperature           | typ. 3000k (warm white) |
| Luminous flux                | typ. 525lm (warm white) |
| Colour rendering index (CRI) | min. 90, (R9 min. 50)   |
| Beam angle                   | RGBW 120°<br>WW 38°     |
| Unified glare rating (UGR)   | <19                     |

## Product Characteristics

|          |                        |
|----------|------------------------|
| Colours  | Gold - Part No. 100491 |
| Material | Alu and glass          |
| Finish   | Matte                  |



## Weight & Dimensions

|                    |  |
|--------------------|--|
| Net weight         | 205g   |
| Total weight       | 239g   |
| Product Dimensions | Outer diameter of bezel: 86mm (3.39")<br>Installation depth: 40mm (1.57")<br>Hole diameter: 68 ... 72mm (2.68 ... 2.83") |



|           |   |
|-----------|---|
| Pack size | 118x115x55mm / 4.65x84.53x2.17" (LxWxH) |
|-----------|---|

## Certifications & Standards

|                |   |
|----------------|---|
| Safety Rating  | IP20  |
| Certifications | <ul style="list-style-type: none"> <li>UL 1598</li> <li>CSA C22.2</li> <li>IC Rated</li> <li>California Title 24 JA8-2016 compliant</li> </ul> <div style="text-align: right;">   </div> <p>SUITABLE FOR DAMP LOCATIONS<br/>CONVIENT AUX EMPLACEMENTS HUMIDES<br/>CLASS 2 INPUT ONLY<br/>ENTRÉE DE CLASSE 2 UNIQUEMENT</p> |

Installation must be carried out by a qualified electrician in accordance with the relevant regulations.

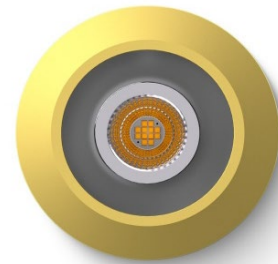
### Published by Loxone Electronics GmbH

Smart Home 1  
4154 Kollerschlag  
Austria  
Tel: +43 7287 7070-0  
loxone.com

## Datenblatt

### LED Spot RGBW Tree

Art. Nr. 100491



#### Infos zum Produkt

Der Loxone LED Spot RGBW Tree ist ein Einbauspot, der Farblicht und warmweißes Licht kombiniert. Die Ansteuerung und Dimmung erfolgt direkt über die Tree Schnittstelle.

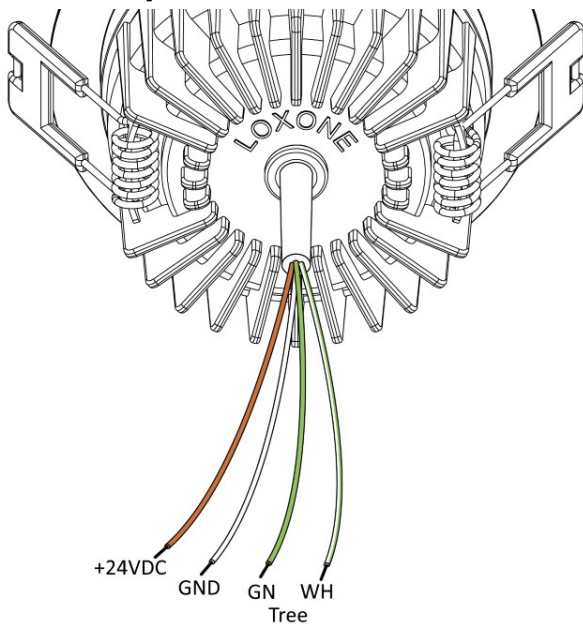
#### Elektrische Daten

|                                 |   |
|---------------------------------|---|
| Spannungsversorgung             | 21,6 ... 25,2VDC  |
| Leistungsaufnahme               | Standby: <100mW<br>Rot: 2,0W<br>Grün: 1,7W<br>Blau: 1,7W<br>Warmweiß: 7,5W<br>max. 7,5W |
| Dimmbereich                     | 0 ... 100%  |
| Umgebungstemperatur             | -40 ... 55°C / -40 ... 131°F  |
| Luftfeuchtigkeit                | max. 95% r.H. (nicht kondensierend)   |
| PWM Frequenz                    | 400Hz   |
| Energieeffizienz (EU) 2017/1369 | G   |

#### Anschlüsse

|                         | Anschlussleitung            | Anschlussklemmen                         |
|-------------------------|-----------------------------|--|
| Leiterquerschnitt       | 0,75mm <sup>2</sup> / AWG18 | 0,14 ... 4mm <sup>2</sup> / AWG24 ... 12 |
| Abisolierlänge          | 5mm / 0,2"                  | 11mm / 0,43"                             |
| Temperaturbeständigkeit | max. 70°C / 158°F           | max. 85°C / 185°F                        |
| Kabellänge              | 120mm / 4.72"               | -  |
| Orange / Weiß           | + 24VDC / GND               | -  |
| Grün / Weiß             | Loxone Tree                 | -  |

## Anschlussplan



## Lichteigenschaften

|                                       |                       |
|---------------------------------------|-----------------------|
| Farbtemperatur                        | typ. 3000k (warmweiß) |
| Lichtstrom                            | typ. 525lm (warmweiß) |
| Farbwiedergabeindex (CRI)             | min. 90, (R9 min. 50) |
| Strahlwinkel                          | RGBW 120°<br>WW 38°   |
| Einheitliche Blendungsbewertung (UGR) | <19                   |

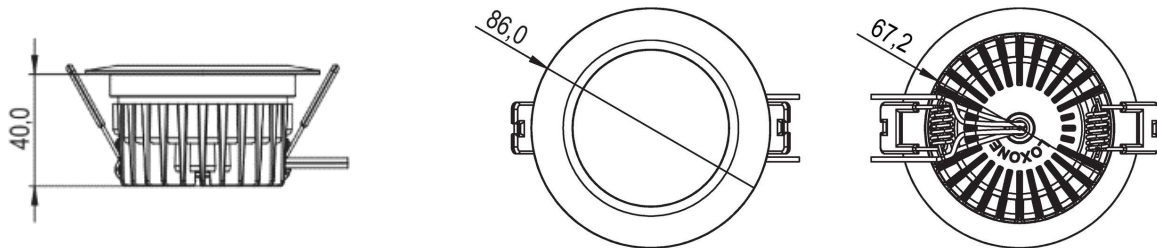
## Produkteigenschaften

|           |                        |
|-----------|------------------------|
| Farben    | Gold - Art. Nr. 100491 |
| Material  | Alu und Glas           |
| Glanzgrad | Matt                   |

# LOXONE




## Gewicht & Abmessungen

|               |   |
|---------------|---|
| Nettogewicht  | 205g  |
| Bruttogewicht | 239g  |
| Produktmaße   | Außendurchmesser des Frontrings: 86mm (3,39")<br>Einbautiefe: 40mm (1,57")<br>Lochdurchmesser: 68 ... 72mm (2,68 ... 2,83") |



|         |   |
|---------|---|
| Packmaß | 118x115x55mm / 4.65x84.53x2.17" (LxWxH) |
|---------|---|

## Zertifizierungen & Standards

|                  |   |
|------------------|---|
| Schutzart        | IP20  |
| Zertifizierungen | UL 1598<br>CSA C22.2<br>IC Bewertung<br>Kalifornien Titel 24 JA8-2016 konform<br><br> <br>FÜR FEUCHTRÄUME GEEIGNET<br>NUR KLASSE 2 EINGANG<br><br> |

Die Installation muss nach den einschlägigen Vorschriften durch eine Elektrofachkraft erfolgen.

## Veröffentlicht von Loxone Electronics GmbH

Smart Home 1  
4154 Kollerschlag  
Österreich  
Tel: +43 7287 7070-0  
loxone.com